

# Mg-Ni (Magnesium-Nickel)

H. Okamoto

The Mg-Ni phase diagram in [Massalski2] was redrawn from [1985Nay].

[2005Isl] assessed the Mg-Ni system thermodynamically using the new data given by [1998Jac]. Figure 1 shows the calculated Mg-Ni phase diagram. This is very similar to the one assessed by [1985Nay]. Due to phase boundaries in the diagram of [1985Nay] contained more abrupt change of slope than the diagram of [2005Isl], the latter seems to be more likely presentation of the true equilibrium.

## References

- 1985Nay:** A.A. Nayeb-Hashemi and J.B. Clark, The Mg-Ni (Magnesium-Nickel) System, *Bull. Alloy Phase Diagram*, 1985, **6**(3), p 238-244
- 1998Jac:** M.G.H. Jacobs and P.J. Spencer, A Critical Thermodynamic Evaluation of the System MG-NI, *Calphad*, 1998, **22**(4), p 513-525
- 2005Isl:** F. Islam and M. Medraj, The Phase Equilibria in the Mg-Ni-Ca System, *Calphad*, 2005, **29**(4), p 289-302

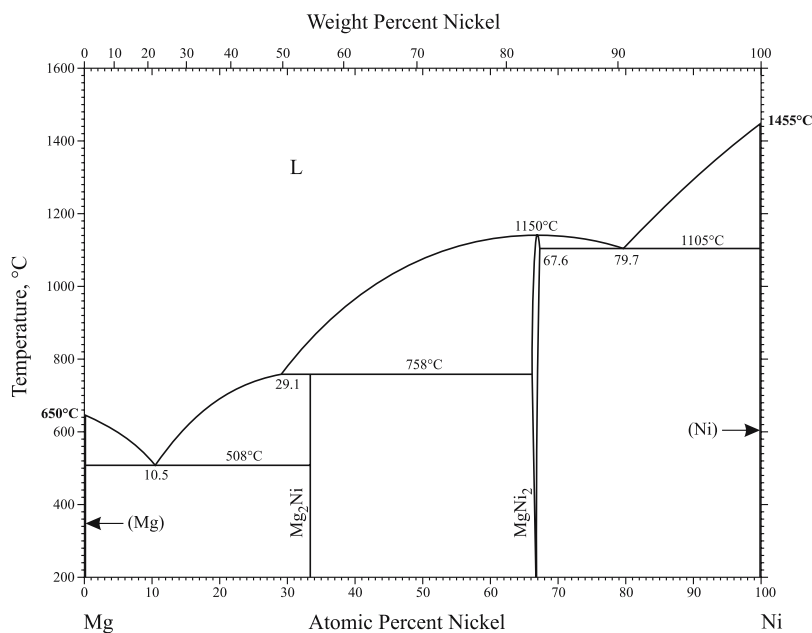


Fig. 1 Mg-Ni phase diagram